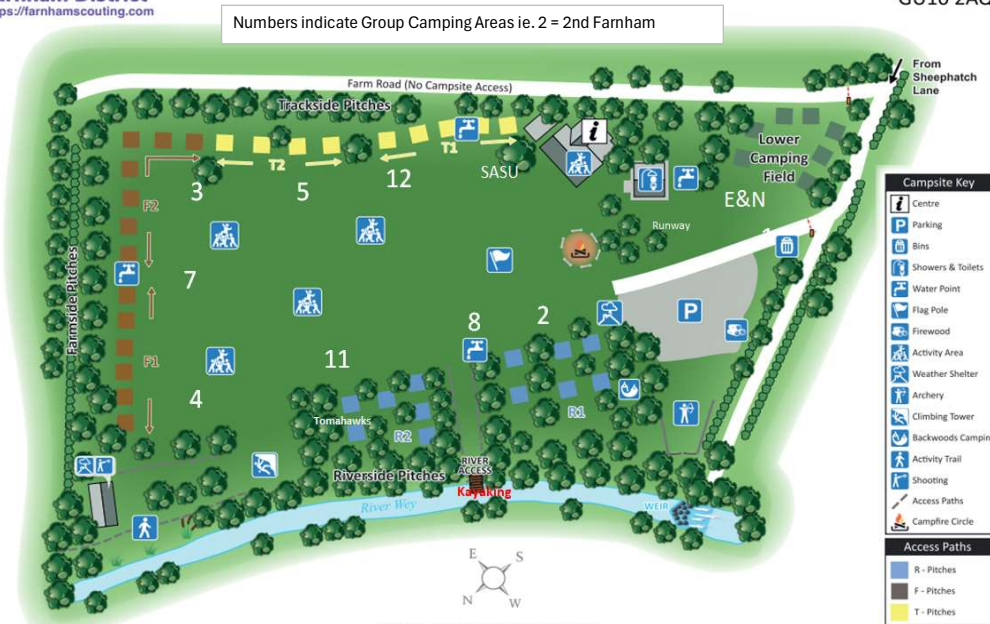


Farnham District Scouts - Family Camp Rules



Garner's Field Campsite
Tilford, Farnham
GU10 2AQ

- VOLUNTEERS** we cannot run Family Camp without volunteers, all Groups have activities which will need assistance as well as other aspects of the camp so please give some of your time to help to make the weekend a roaring success.
- SECURITY/SAFETY** is everyone's responsibility. Wrist bands must be worn at all times – if you lose yours, please get a replacement immediately as anyone without a wrist band may be asked to leave.
- EVERYONE WELCOME** all adults (over 18) who wish to stay overnight **MUST** have a Scout Membership number with a valid DBS.
- UNDER 18's** are the responsibility of their parents/guardians at all times. Explorer Scouts are the responsibility of the Explorer Leaders on site.
- OUT OF BOUNDS** the weir and the opposite river bank are strictly out of bounds. Other areas may be declared "Out of Bounds" for some activities.
- VEHICLES** must be offsite **from 7pm Friday until 2pm Sunday** – this is for safety. Parking is on the Herons Way site. In the event of heavy rain vehicles may be not be allowed on the Garners Field site. Please follow instructions from the Site Volunteer Marshalls – failure to do so will result in you being asked to leave.
- SPEED LIMIT** is strictly 5 MPH (slow walk) speed limit **ON THE LANE & ON SITE**
- CAMPING** space will be allocated by Scout Groups/Units; Site Volunteer Marshalls will instruct you where to go on arrival.
- CARAVANS** must be placed on the camp site by Thursday evening.
- FACILITIES** should be left the way you would like to find them. If you find any problems let a member of the site team know (2-way radio and reflective jacket is a good indicator)
- BBQ's/Fires** are only permitted in your camping area, at least 1m from any tent and must be off the ground.
- CATERING** is self-catering, although refreshments will be served throughout the weekend. See the Pop up Café menu for details.
- DAY VISITORS** should leave the site by 9:30pm every day.
- PETS** are not permitted on site.
- ALCOHOL POLICY** for the site is sensible consumption of alcohol by over 18's only.
- SMOKING/VAPOURING** Garner's Field is a smoke/vapour free site. Adults (over 18 only) who smoke must do so responsibly, off site.
- DAILY PROGRAMME** will be announced at flag break each day for announcements and a noticeboard outside the Hall.



© 2018 Caravan Park Maps by www.holidayparkmaps.com

Family Camp Timetable		
Wednesday	6:30pm	Pitching at own risk
Thursday		Caravans must be on site
Friday	3:00pm	Site Open
	7pm	All Vehicles to be site
	7:30pm	Flag Break
	7:45pm	Silent Disco
	8pm	Bingo
Saturday	11pm	Quiet Time Start
	7am	Quiet Time End
	8am	Café Open
	9am	Day Visitors check in
	9:15am	Flag Break
	9:30am	Morning Activities
	12:30pm	Lunch - Activities Stop
1:30pm	Afternoon Activities	
Sunday	5pm	End Activities
	6:30pm	Silent disco
	8pm	Camp Fire
	11pm	Quiet Time Start
	7am	Quiet Time End
	8am	Café Open
	9:15am	Flag Break
9:30am	Morning Activities	
12noon	Lunch - Activities Stop	
12:30pm	Café Close	
1pm	St George's service	
1:30pm	Free Donuts	
2pm	Earliest Time Vehicles Maybe Allowed on Site	

Activities - Subject to availability and change			
Friday			
Café - Hot Chocolate & Biscuits - after 7pm			
LED BY	ACTIVITY	LED BY	ACTIVITY
District	Bingo	District	Silent Disco
Saturday			
Café - 8am - 10am - Breakfast		Café - 10am - 7pm - Meals (see menu)	
LED BY	ACTIVITY	LED BY	ACTIVITY
District	Crafts	8th	Nail Art
District	Archery	11th	Tomahawks
2nd	Backwoods Cooking	12th	Aerial Runway
3rd	Branding	Explorers/Network	Inflatables
4th	Shooting	Higher Events	Cave
5th	Cross Bows	Blackwater Valley Canoe Club	Kayaking
7th	Fire starting	District	Silent Disco
Sunday			
Café - 8am - 10am		Café - 10am - 12:30pm	
LED BY	ACTIVITY	LED BY	ACTIVITY
District	Archery	4th	Shooting
Reptasia Events	Morning Activities	11th	Tomahawks
Magic Wanda	Magic Show	12th	Aerial Runway
1pm - St. George's Service			

SUBJECT TO CHANGE/AVAILABILITY
FAMILY CAMP Café
All Proceeds to Farnham District Scouts
Cash or Card (min £3)
Bring Your Own plates, cutlery, cups.

FREE Squash all weekend;
FREE Hot Chocolate & biscuits after 7pm
Coffee, Tea, Herbal Tea £1.00 Available All Day
Cakes from £2.00 Available All Day
Ice Cream (Vanilla, Choc, Strawberry) £1.00 per cone - 10am-Noon

Saturday 8am until 10am & 12noon until 2pm
Pick 'n' Mix All-day Breakfast – all items £1.00 each.
1xBacon, 1xSausage*, 1 serving of Baked Beans,
2xsllices of bread, 1xbap
*Vegetarian sausage available
Saturday 4pm until 7pm
Burger** £4.00; Hot Dog £4.00
**Vegetarian burger available

Wristbands

GREEN

Campers

RED

Day Visitor - must be off site by 21:00 each day

PURPLE

District Volunteers

Volunteers - this event is run by volunteers please be respectful, follow instruction and help when you can.

Parking - No unauthorised vehicles on site between Friday 19:00 until Sunday 14:00. All parking is on Heron Wey - please follow volunteer marshalls instruction.

First Aid - first aid facilities are in the activity centre or ask one of the marshalls for help.

Kayaking - this activity is only on Saturday and sign up is essential. Activity is for all ages although under 18 must be signed up by an adult. Depending on the number of volunteers available there maybe a restriction on number of those requiring additional 1:1 attention in a session.

Shooting - this activity is open to over 8 years old and under 18 must be signed up by an adult.

Aerial Runway - this activity is open to all who are able to hold on and under 18's must be signed up by an adult.

Silent Disco - please ensure all headsets are put back each evening.

FARNHAM DISTRICT FAMILY CAMP 2024

Scouts
Farnham District

